



***The San Francisco Survey
Number XXIV
October 2022***

About the San Francisco Survey



The San Francisco Survey is a project of Advance SF, conducted by EMC Research. Our goals are to develop an ongoing tool to gauge public opinion and to help inform elected officials and interested parties of the public's views on policy issues. The San Francisco Survey uses an open and transparent platform and will release the results of each of the surveys it conducts.

In addition to providing survey results, the San Francisco Survey will release demographic and voter data on a regular basis to help inform policy discussions in San Francisco.

Methodology



- Web Survey of San Francisco Voters offered in English, Chinese, and Spanish
- Demographics closely match the demographics of the registered voters in the city

Please note that due to rounding, percentages may not add up to exactly 100%

*Surveys only offered in English and Chinese.

** An additional 246 interviews were conducted in District 5.

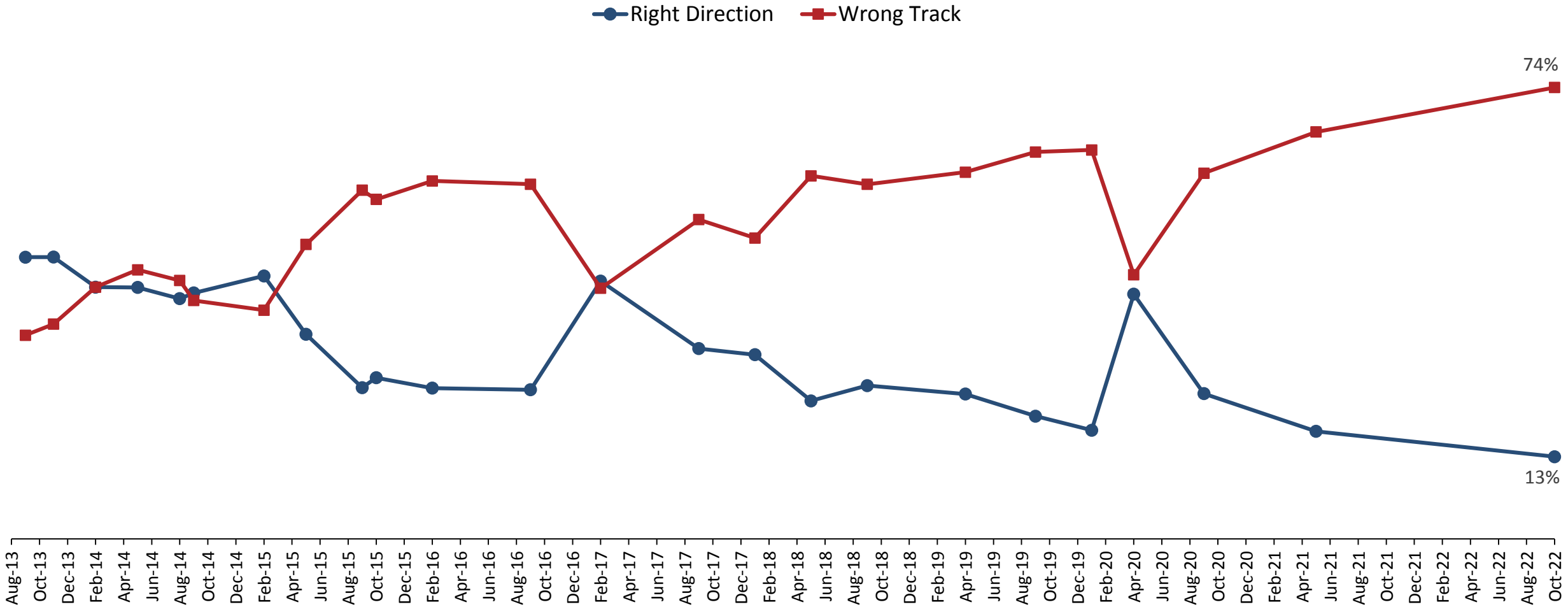
*** An additional 252 interviews were conducted in District 1, 256 interviews in District 5, and 252 interviews in District 7.

	Date	# of Interviews		Date	# of Interviews
Survey I*	September 10-16, 2013	553	Survey XIII	January 31- February 8, 2017	631
Survey II*	November 4-7, 2013	631	Survey XIV	August 28-September 7, 2017	604
Survey III*	February 11-17, 2014	616	Survey XV	December 27, 2017- January 3, 2018	773
Survey IV*	April 30 – May 6, 2014	582	Survey XVI	April 24-May 1, 2018	745
Survey V	August 4 – 12, 2014	622	Survey XVII	August 27-September 4, 2018	830
Survey VI	September 2 – 7, 2014	646	Survey XVIII	April 4-14, 2019	669
Survey VII	February 9-16, 2015	687	Survey XIX**	August 28 – September 4, 2019	702
Survey VIII	April 27-May 1, 2015	710	Survey XX	January 22 – 27, 2020	680
Survey IX	August 27- Sept 3, 2015	844	Survey XXI	April 14 – 21, 2020	663
Survey X	October 21-27, 2015	565	Survey XXII***	August 26 – September 14, 2020	649
Survey XI	February 17-22, 2016	886	Survey XXIII	May 5 – 10, 2021	642
Survey XII	September 6-11, 2016	644	Survey XXIV	October 3-9, 2022	600



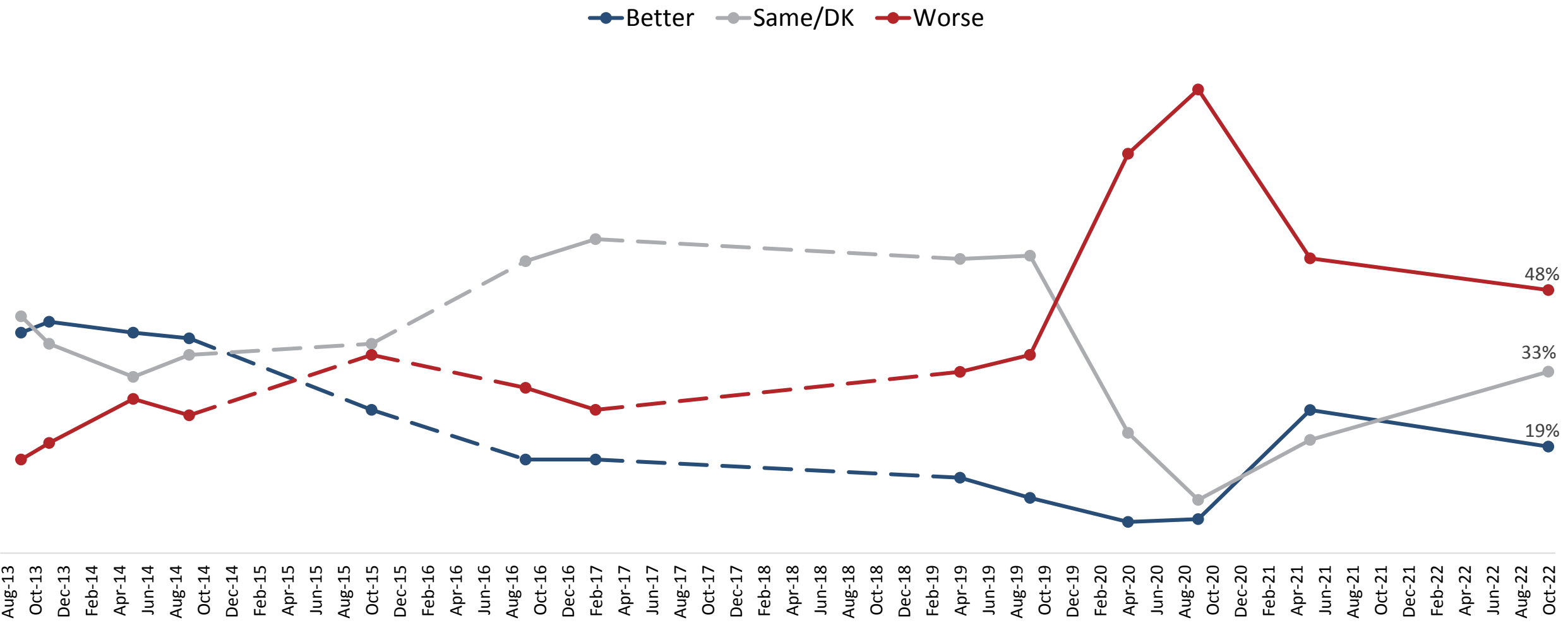
Overall Mood

Right Direction/Wrong Track



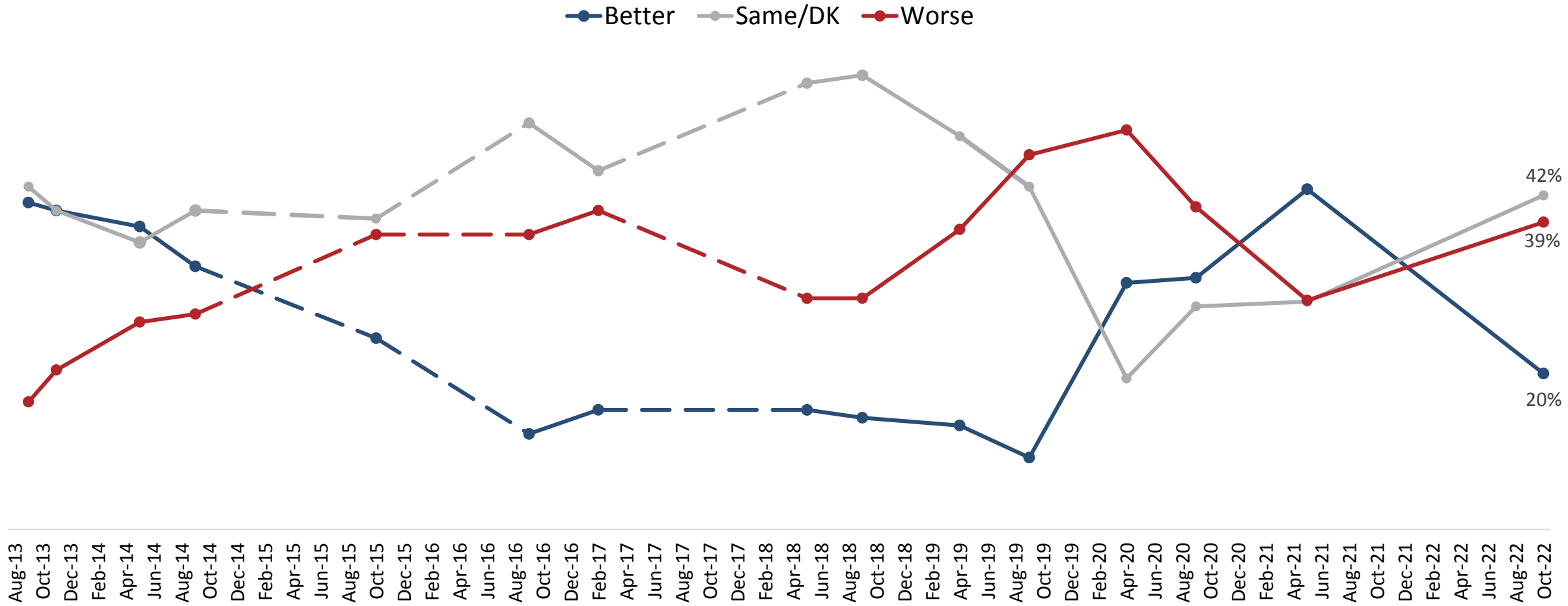
Q3. Do you think things in San Francisco are generally going in the right direction, or do you feel that things are pretty seriously off on the wrong track?

Perception of Current Economic Conditions



Q5. Would you rate current economic conditions in San Francisco as substantially better, moderately better, the same, moderately worse, or substantially worse than six months ago?

Perception of Future Economic Conditions



Q6. And thinking about the future, how do you expect economic conditions in San Francisco to be six months from now? Would you say substantially better, moderately better, the same, moderately worse, or substantially worse than today?

Top Three Problems In San Francisco

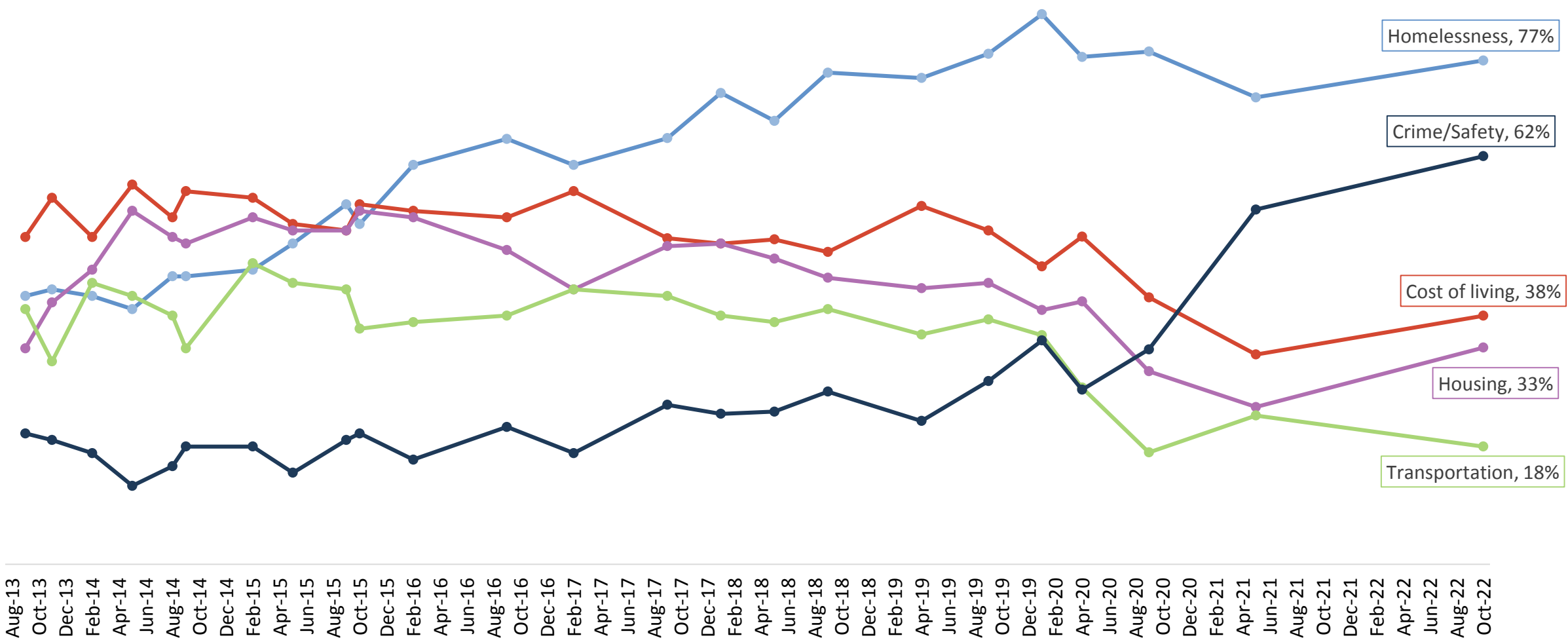


Total % Mentioning as one of top 3	*2013	*2014	*2015	*2016	*2017	*2018	Apr '19	Sep '19	Jan '20	Apr '20	Sep '20	2021	Oct '22
Homelessness	42%	42%	50%	63%	63%	72%	74%	78%	84%	78%	78%	71%	77%
Crime/safety	20%	16%	18%	19%	21%	24%	22%	28%	34%	27%	33%	54%	62%
Cost of living	53%	55%	54%	54%	54%	49%	55%	51%	46%	50%	41%	32%	38%
Housing	37%	50%	52%	51%	46%	47%	42%	43%	39%	40%	29%	24%	33%
Politicians/Gov't	8%	8%	8%	10%	8%	6%	8%	6%	8%	8%	14%	17%	14%
Poverty	11%	9%	9%	9%	10%	10%	12%	12%	9%	11%	14%	9%	10%
Public transportation	21%	23%	19%	16%	16%	15%	13%	15%	15%	11%	9%	9%	9%
Education	21%	18%	14%	12%	9%	9%	9%	8%	9%	5%	9%	11%	8%
Economy/Jobs	15%	10%	5%	4%	4%	3%	2%	1%	1%	11%	16%	8%	7%
Streets & roads	14%	16%	10%	10%	15%	9%	11%	9%	11%	8%	6%	8%	7%
Traffic			13%	12%	12%	14%	12%	13%	9%	9%	2%	6%	2%
Environment	3%	2%	2%	2%	2%	2%	1%	2%	2%	2%	4%	2%	4%
Taxes	6%	6%	5%	6%	5%	5%	4%	5%	6%	5%	8%	7%	4%
Parking	13%	10%	9%	7%	7%	5%	3%	4%	4%	4%	3%	5%	4%
City Budget	7%	4%	2%	4%	4%	2%	1%	2%	2%	2%	4%	3%	2%
Healthcare	5%	4%	2%	2%	4%	3%	3%	2%	1%	9%	3%	2%	2%
Development	4%	7%	7%	6%	5%	4%	4%	2%	3%	2%	2%	1%	2%
Immigration	3%	3%	3%	2%	3%	3%	3%	2%	2%	1%	1%	2%	1%
Public employee pensions	7%	5%	4%	3%	3%	2%	2%	1%	1%	2%	2%	2%	1%
Parks	2%	1%	1%	1%	1%	1%	-	0%	1%	0%	0%	0%	0%

Q7. What would you say are the most important problems facing San Francisco today? (up to 3 responses accepted – percentages total over 100%)

* Averages of surveys conducted during 2013-17

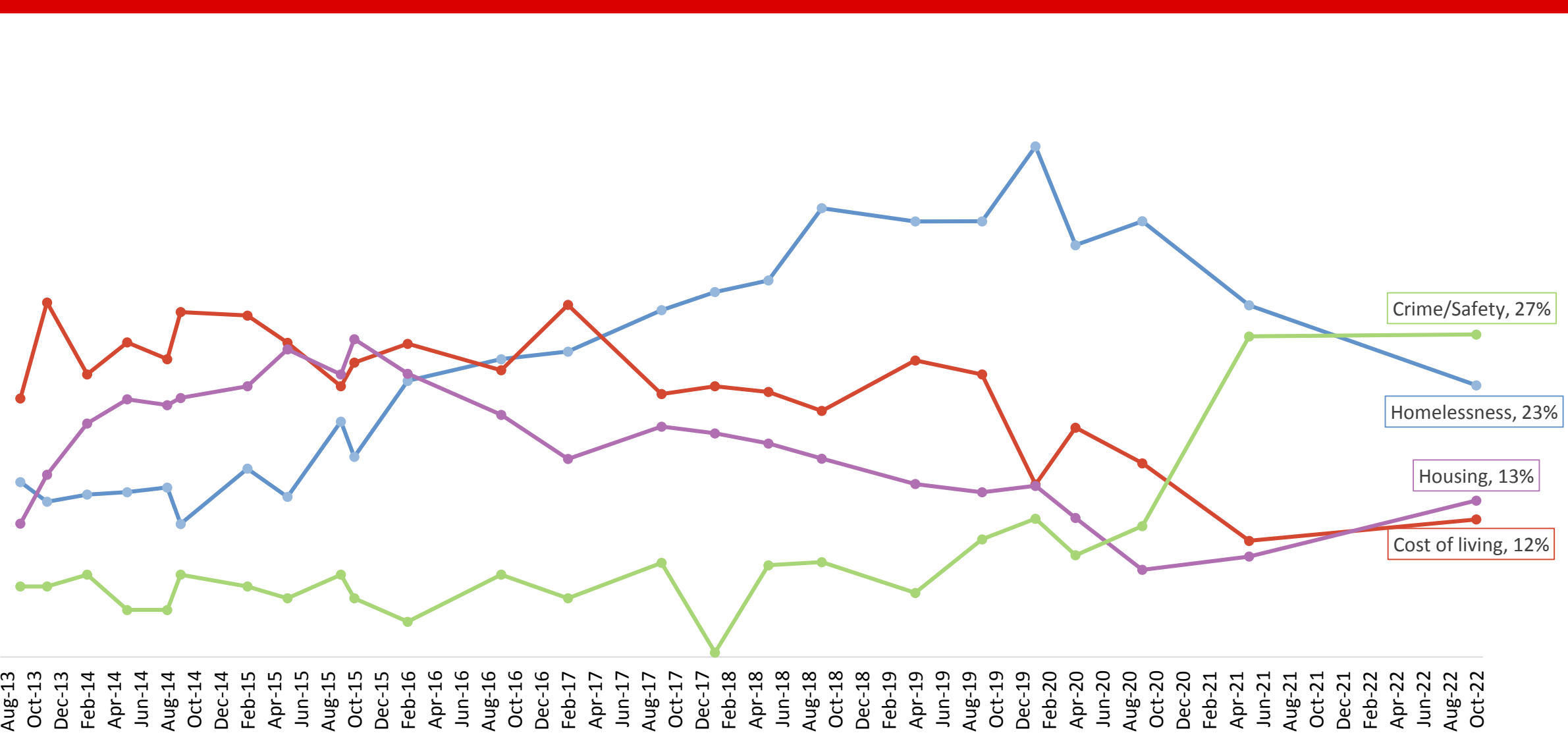
Top Three Problems In San Francisco



* "Transportation" combines responses of "public transportation", "streets and roads", and "traffic".

Q7. What would you say are the most important problems facing San Francisco today? (up to 3 responses accepted – percentages total over 100%)

Single Most Important Problem (Top Ranked)



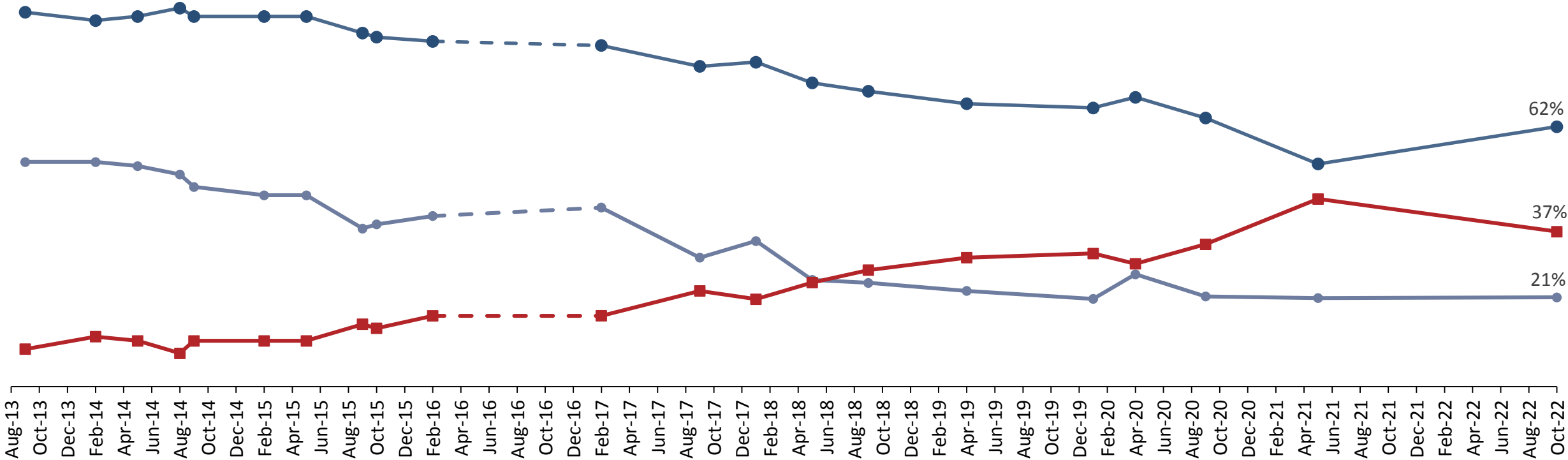
Q7b. Please rank your choices in order of importance. You can move them by clicking and dragging them up or down. Even if they're already in the order you want, please click on the items below in order to continue. (top ranked response)

San Francisco Attitudes



San Francisco is a good place to live

Strongly Agree Total agree Disagree



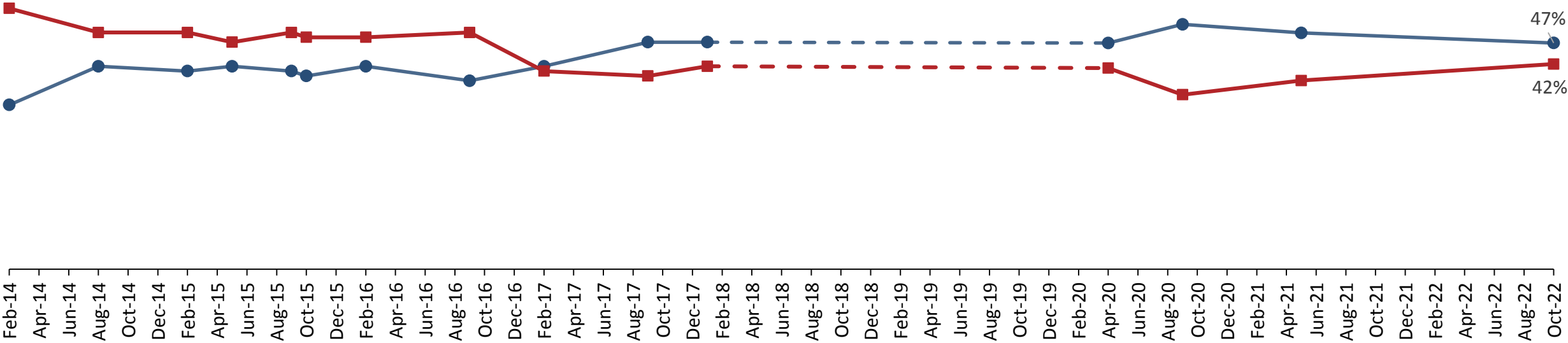
Q16. Please indicate whether you agree or disagree with each of the following statements:

San Francisco Attitudes



I am likely to move out of San Francisco in the next few years

● Agree ■ Disagree

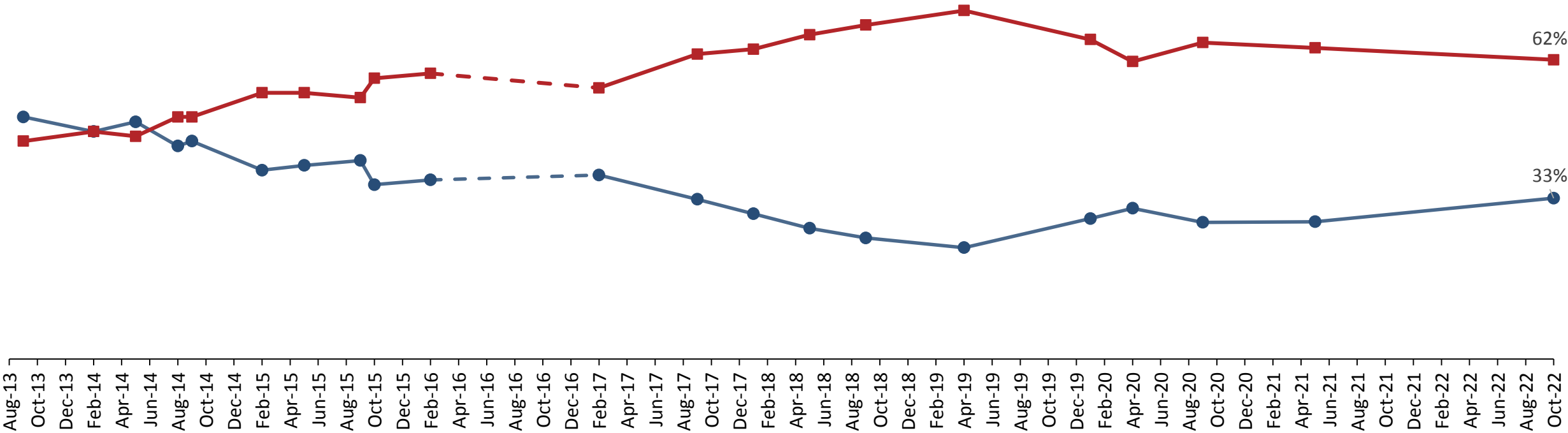


San Francisco Attitudes

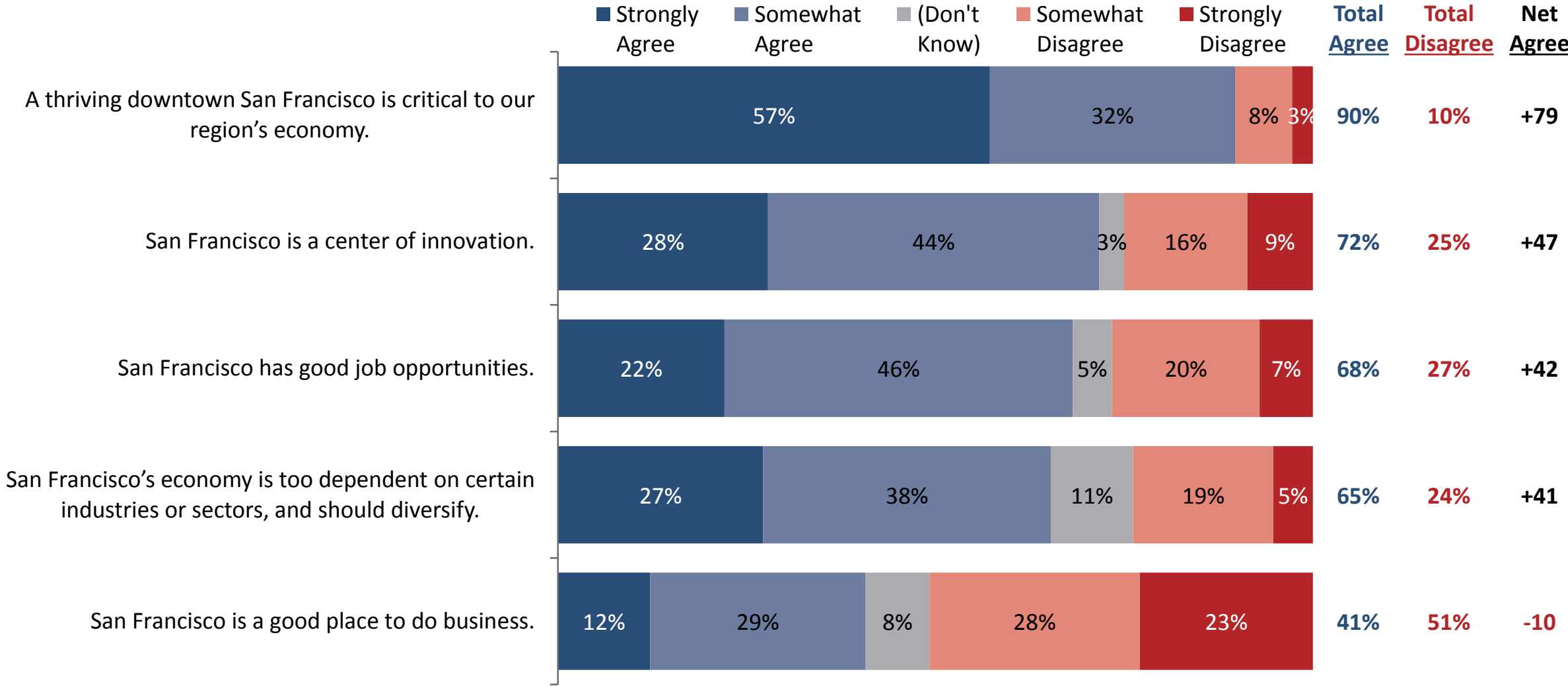


San Francisco is a good place to raise a family.

● Agree ■ Disagree

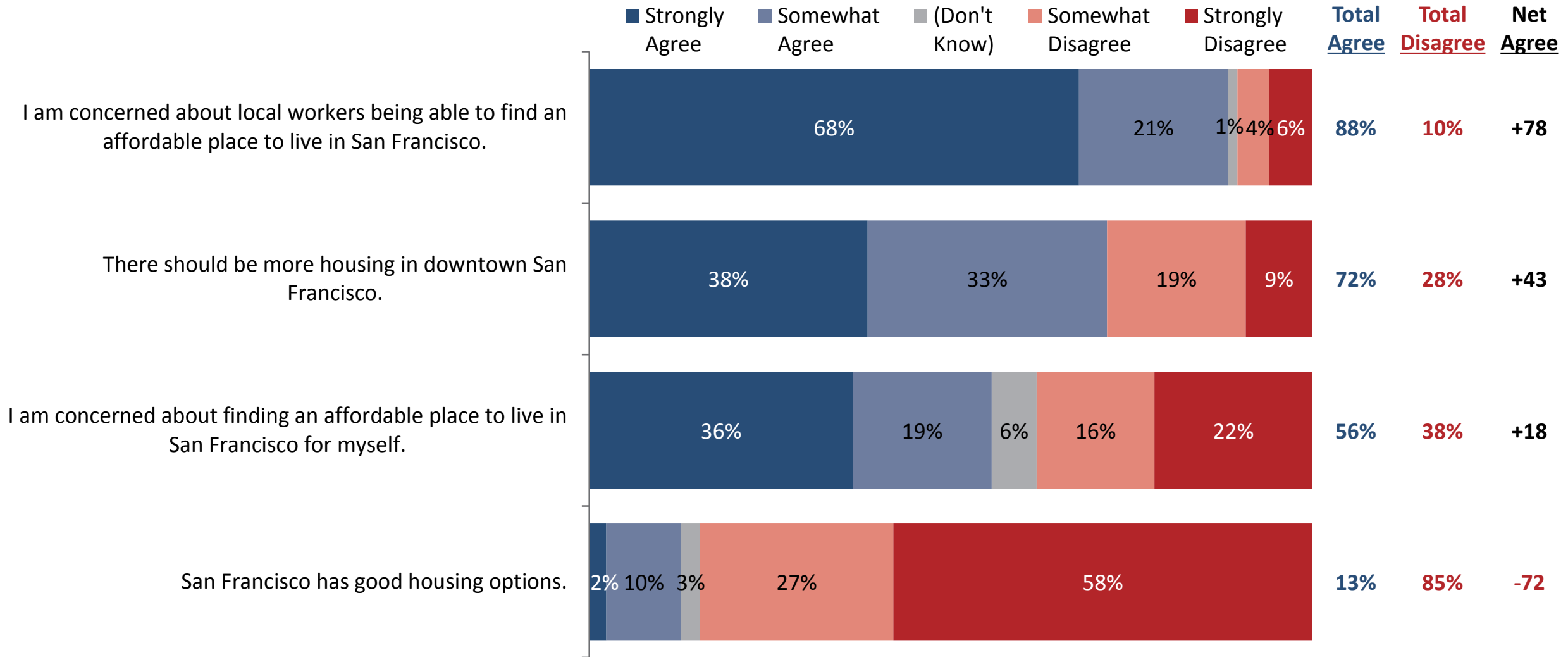


San Francisco Attitudes (Economy)



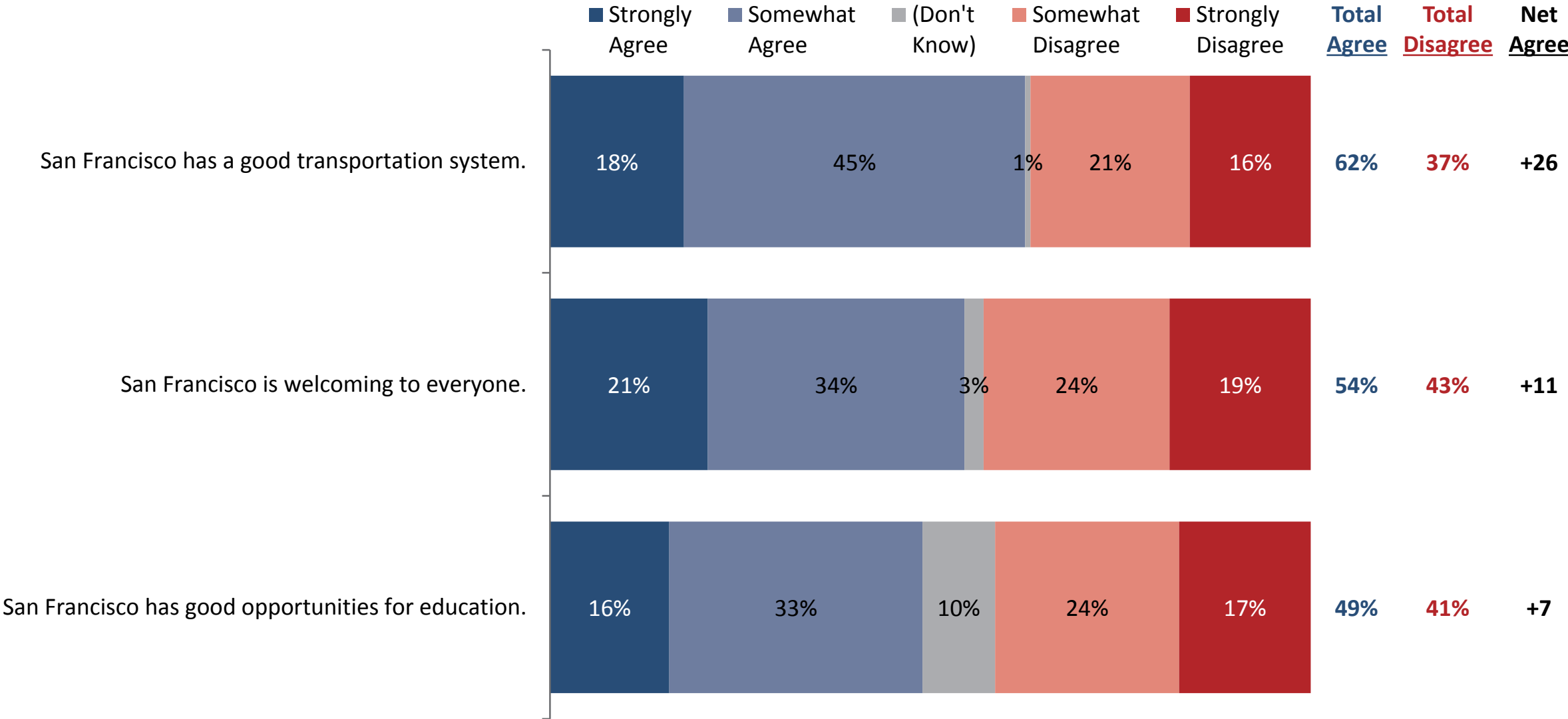
Q19/20/22/28/39. Please indicate whether you strongly agree, somewhat agree, somewhat disagree, or strongly disagree with each of the following statements.

San Francisco Attitudes (Housing)



Q24/26/27/45. Please indicate whether you agree or disagree with each of the following statements:

San Francisco Attitudes (Quality-of-Life)

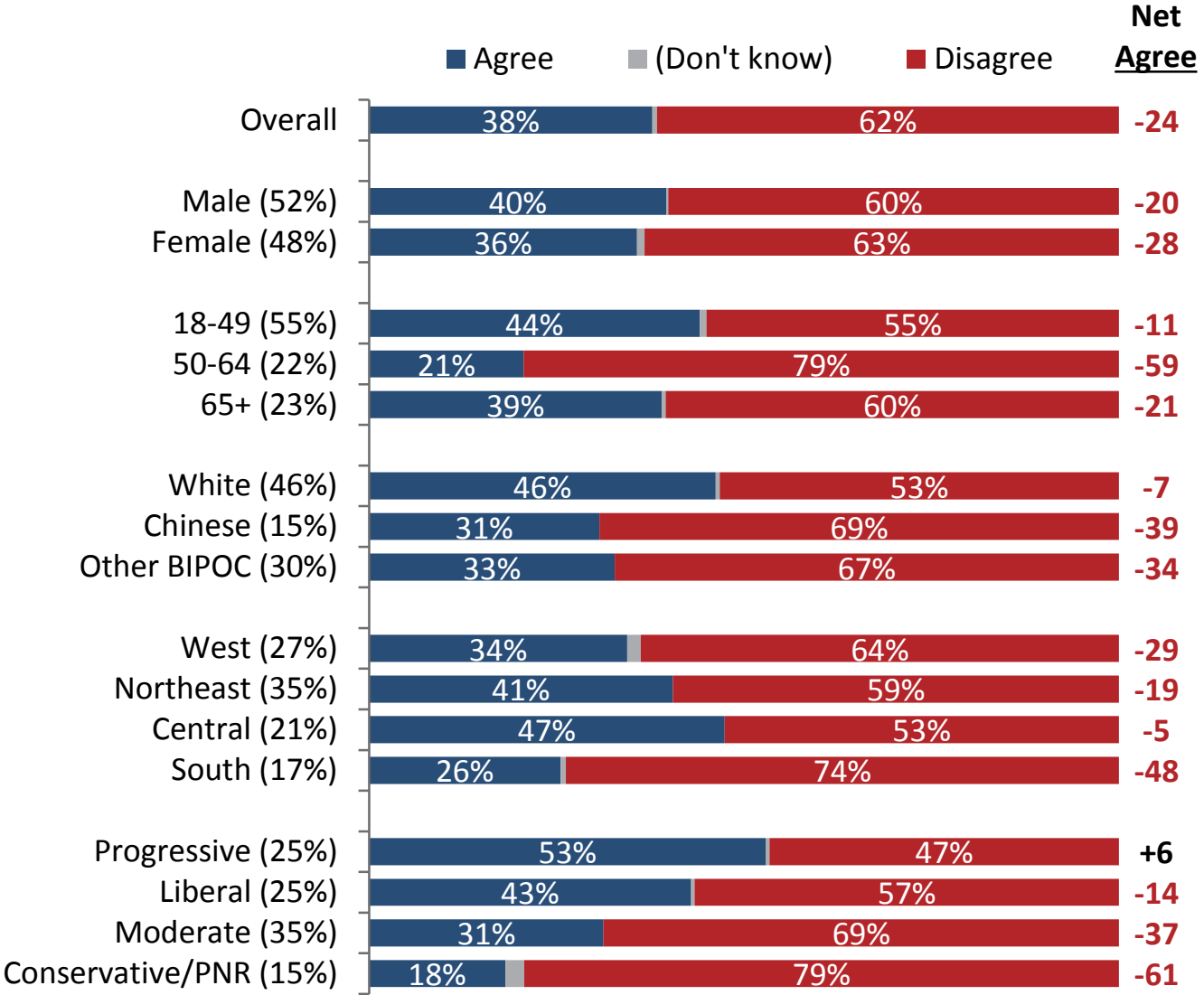
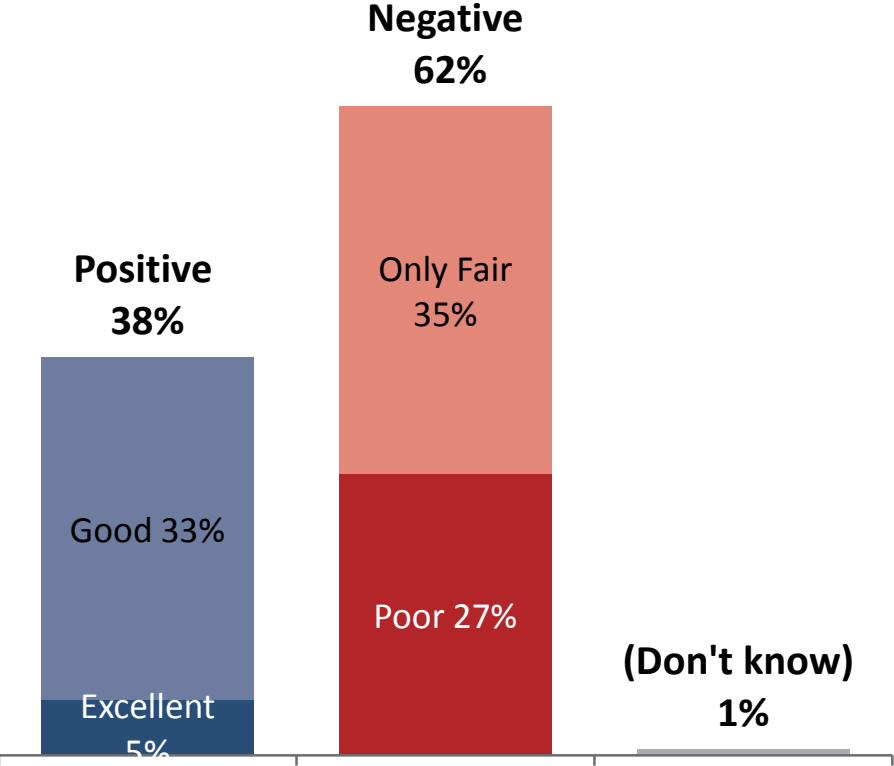


Q21/23/25. Please indicate whether you strongly agree, somewhat agree, somewhat disagree, or strongly disagree with each of the following statements.

San Francisco Quality of Life



How would you rate the overall quality of life in San Francisco?

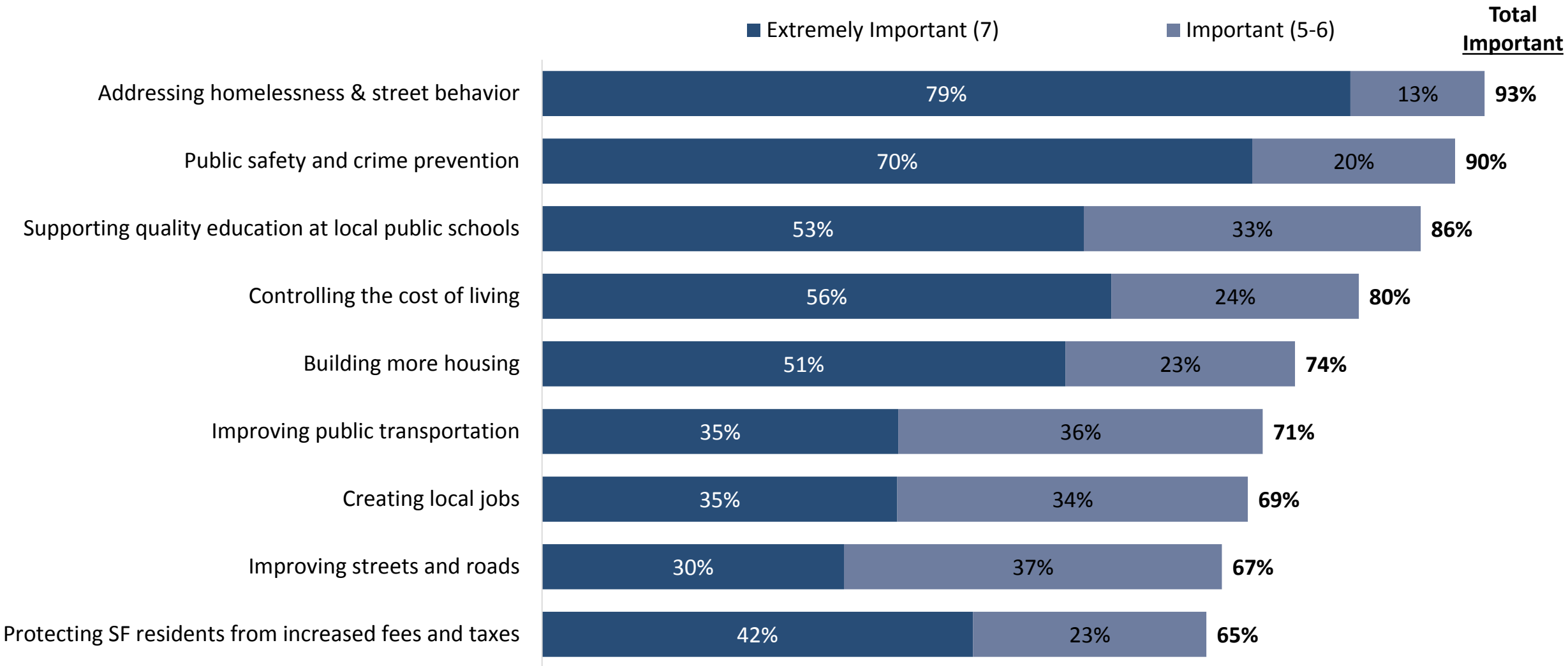


Q4. How would you rate the overall quality of life in San Francisco? Would you say it is excellent, good, only fair, or poor?



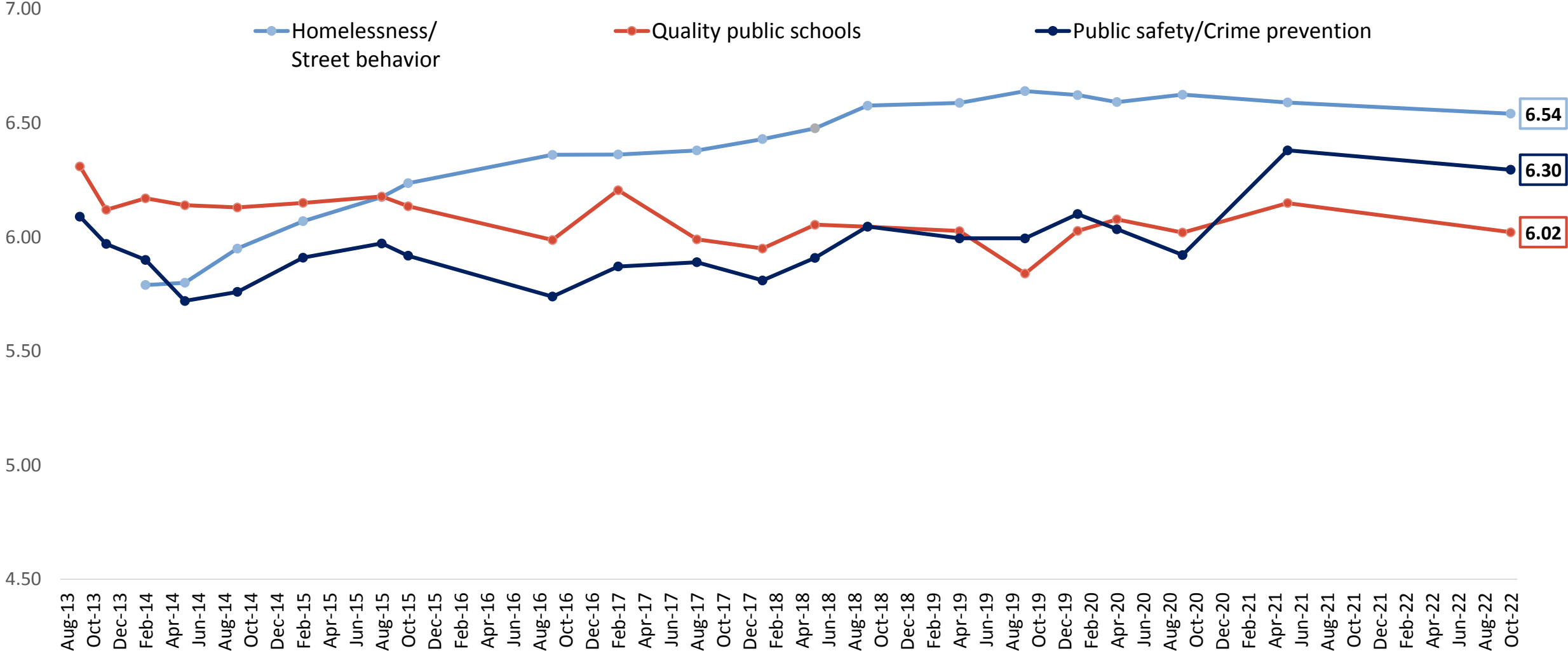
Priorities

General Priorities



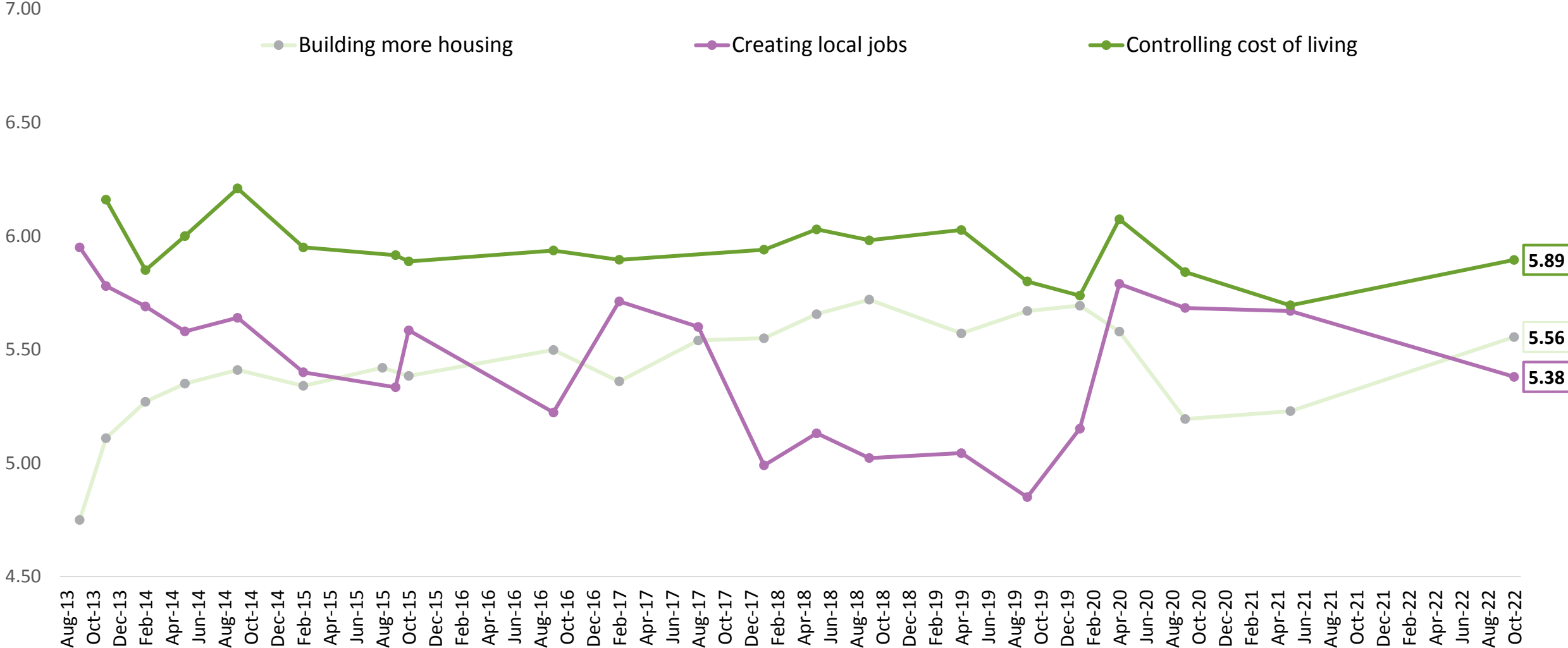
Q29-37. On a scale from 1 to 7 where 1 is not at all important and 7 is extremely important, how important do you feel each of the following should be in San Francisco right now?

General Priorities – Trend Over Time

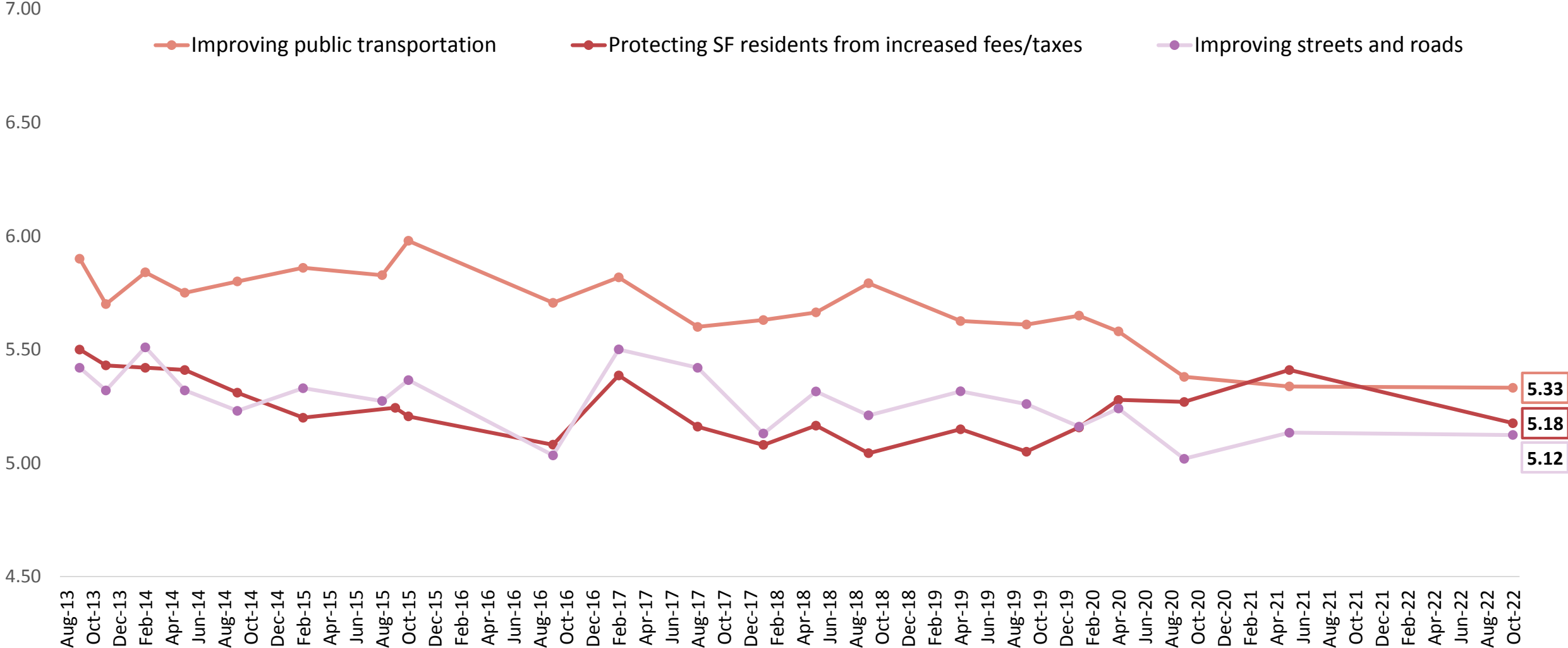


Average score.
 Q29-37. On a scale from 1 to 7 where 1 is not at all important and 7 is extremely important, how important do you feel each of the following should be in San Francisco right now?

General Priorities – Trend Over Time, cont.



General Priorities – Trend Over Time, cont.



Average score.
 Q29-37. On a scale from 1 to 7 where 1 is not at all important and 7 is extremely important, how important do you feel each of the following should be in San Francisco right now?

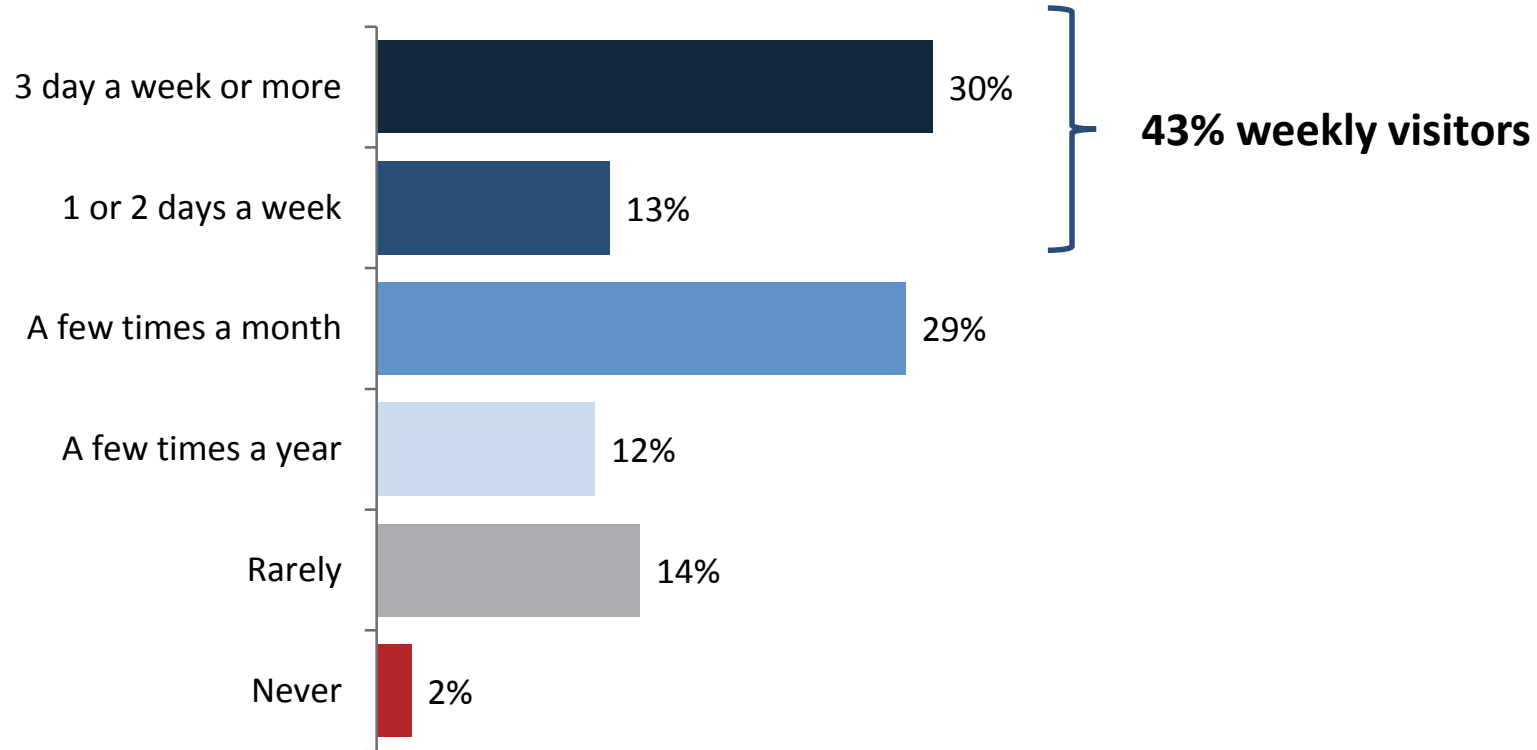


Downtown San Francisco

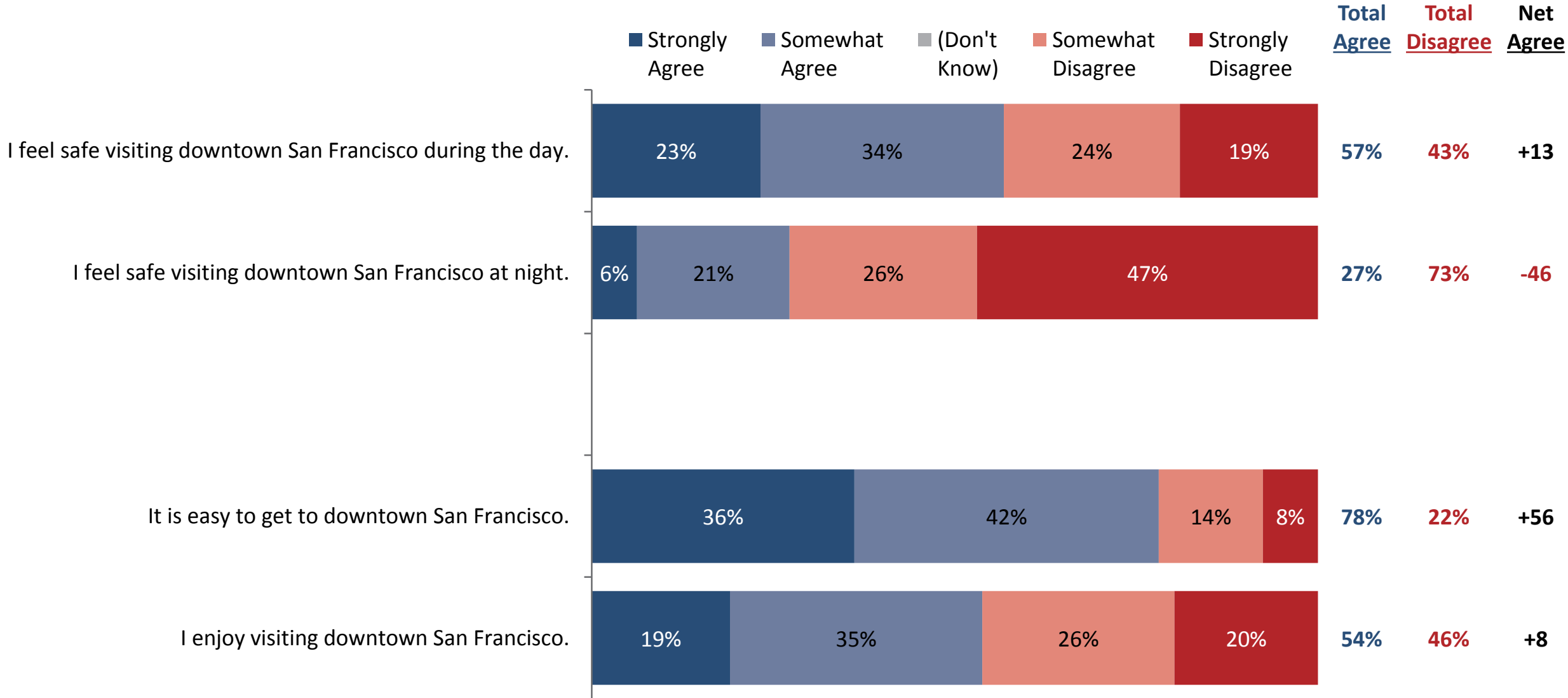
Downtown SF Visit Frequency



Thinking about greater downtown San Francisco, including Civic Center, Union Square, the Financial District, Mid-Market, Yerba Buena, Mission Bay, and to the Chase Center, about how often do you typically go downtown for any reason?

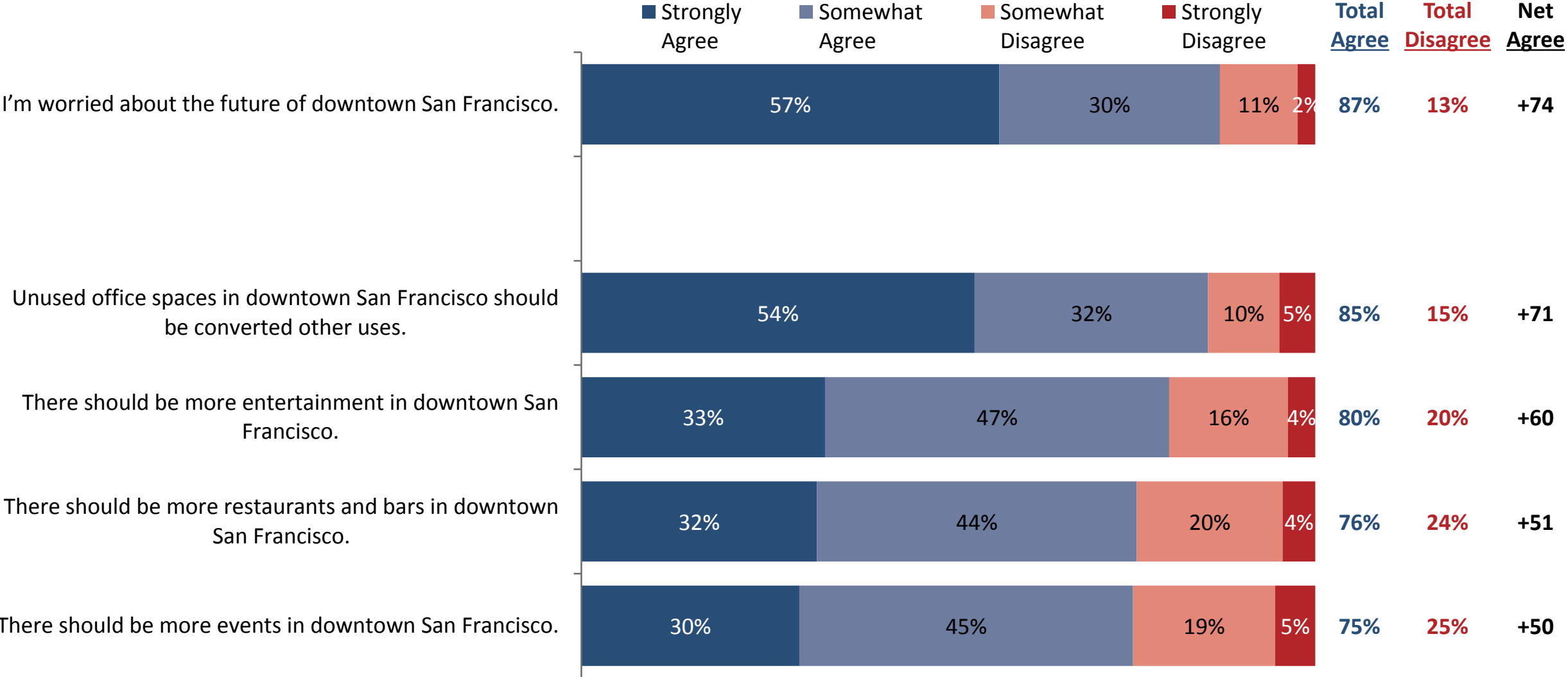


San Francisco Attitudes (Downtown)



Q41-44. Please indicate whether you strongly agree, somewhat agree, somewhat disagree, or strongly disagree with each of the following statements.

San Francisco Attitudes (Downtown Future)



Q40/46-49. Please indicate whether you strongly agree, somewhat agree, somewhat disagree, or strongly disagree with each of the following statements.



Ruth Bernstein

ruth@EMCresearch.com

510.550.8922



SAN FRANCISCO SURVEY

info@thesanfranciscosurvey.com

Twitter: @SanFranciscoSu1